

**LEEDS 2023** YEAR OF  
CULTURE

# LETTING CULTURE LOOSE



# LEEDS 2023

## Our mission:

To deliver a landmark year of culture connecting and benefiting people now and in the future.

## Our vision:

A thriving city and region where creativity fuels opportunity for everyone.

Sustainable

Inclusive

Diverse



# The Programme

## PRODUCE

- 12 major events across the year
- City centre + 33 wards
- Creative Education, Skills, Volunteering
- Including sport/food/everyday creativity

## PARTNER

- With people, organisations and places across the city, region, nation and the world

## PROMOTE

- Raising the profile of the city and region and its cultural offer regionally, nationally and internationally



# Selected highlights so far

## THE AWAKENING

- A free 90 minute show at Headingley Stadium
- Hundreds of local performers shared the stage with artists such as Corinne Bailey Rae, Simon Armitage, Testament, and the Orchestra & Chorus of Opera North.

## THE WOW BARN

- 300 women & non-binary people were trained in construction skills, which they used to build a barn in 24 hours.
- The WOW Barn hosted festivals, comedy, music and activity for schools over a 2 week period, focussing on themes of construction and equality.

## MOON PALACE

- Currently touring Leeds, a mobile observatory in a converted school bus.
- Providing the opportunity for members of the public to observe and learn about the galaxy.





# Nest

# Project Overview

- Nest is an immersive theatre experience that takes the audience on a journey through time to explore themes of climate change, migration and custodianship within the landscape.
- Co-Produced with National Youth Theatre (NYT) – experts in working with young people and in making work in unusual spaces.
- Director: Paul Roseby
- Writer: Emma Nuttall
- Designer: Amy Pitt
- Lighting Designer: Prema Mehta
- Projection Design: PixelLux
- Sound Design: Dan Steele
- Composer: Nicola T Chang
- Movement Director: Matteo Marfoggia
- 5 performances: 5th – 9th September
- Performance times: 7:45 - 9:15pm (approx)



# Project Overview

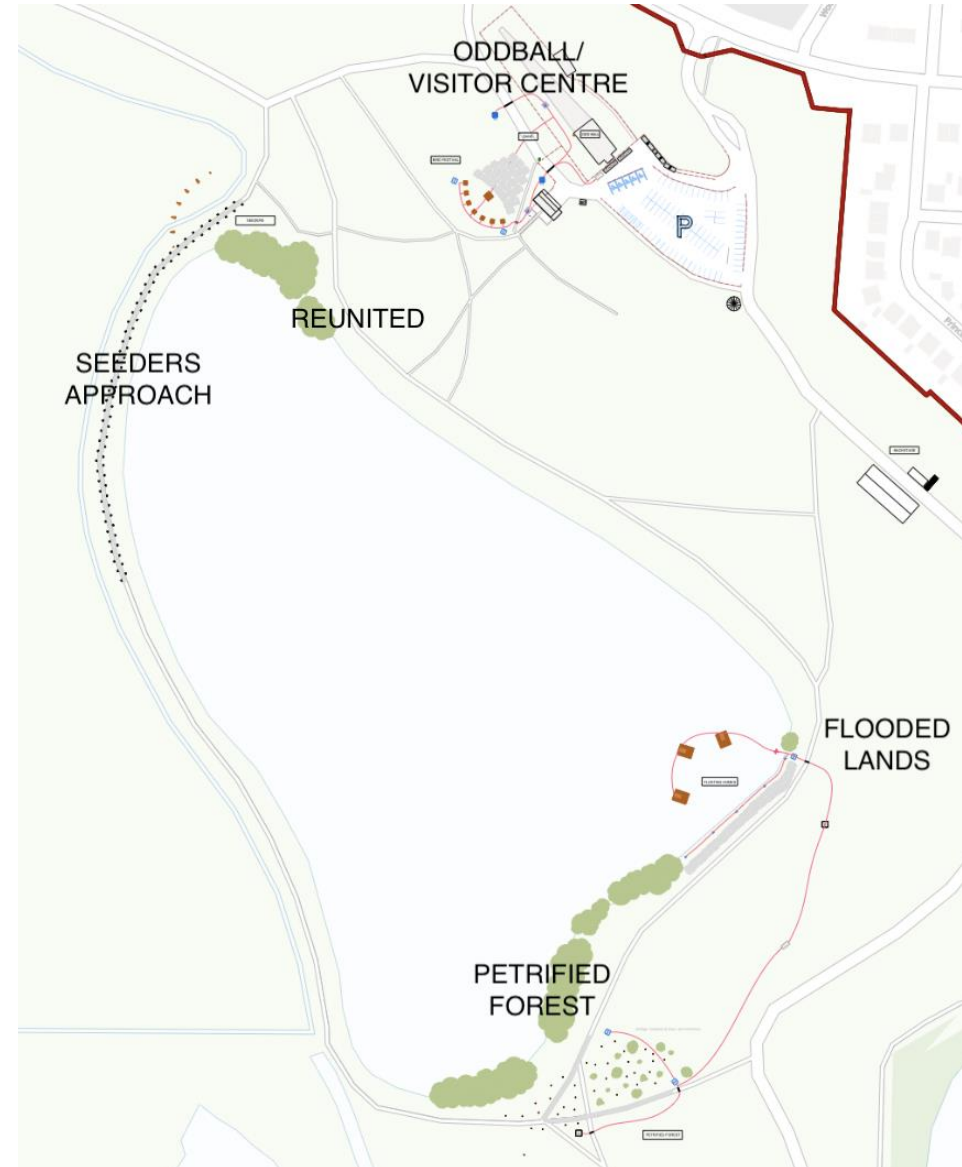
- The project centres the voices of young people and responds to their concerns about climate change. It provides a major platform for young people in the North of England to create work in response to the climate crisis and have their voices amplified.
- Over 100 young people aged 17 – 25 will perform, plus around 10 will take up backstage roles, allowing them to develop essential skills for future roles in the creative industries and beyond.
- Participants have been recruited from across the region and have participated for free in National Youth Theatre training courses in preparation for the performance (usual cost £504 for 10 days). We have worked with partners Leeds Playhouse and Compass Collective (who work with unaccompanied minor refugees and young people seeking asylum) as well as NYT to recruit participants.
- We are awarding bursaries to participants to support them to take part in the performances where they might experience barriers to doing so.
- The project aligns with RSPB's work to encourage young people and local communities to become custodians of St Aidan's.
- It foregrounds and furthers the climate crisis debate with a call to action.

# Project Overview

- St Aidan's is at the heart of this story as audiences are welcomed to a fictionalised bird festival on a wildlife reserve.
- The story takes place mainly in 2050 and centres around Skylar, a young person who has recently lost their grandmother and is looking to reconnect with her and her passion for birds.
- Nest explores heritage, storytelling and the climate crisis, and asks what our futures may look like, and how we can be empowered to shape them.
- Audiences visit several locations across the site, following the route around Bowers Lake.
- All of the sites in the performance are in the recreation area of the park and have been chosen in close consultation with the RSPB.



# Audience journey



# Audience Journey Around Site

- **ODDBALL/VISITOR CENTRE:** The audience begins the performance by gathering together outside the Visitor Centre and in front of the dragline/Oddball.
- **SEEDERS APPROACH:** They continue around the path that rings Bowers Lake, passing between a corridor of characters who line the path, telling stories to the audience as they pass.
- **PETRIFIED FOREST:** The audience arrives at a forest constructed from fabricated trees, some of which cast members will perform on. A boat will set sail on the lake from here to the next act.



- **FLOODED LANDS:** Two floating pontoons are positioned on the lake, on the water's edge, from which performers will perform, while the audience stands on the bank.
- **REUNITED:** The audience moves along to the lake to gather at the bottom of the hill, looking back up the hill towards the Oddball, at the performance taking place on the grass.
- The audience return to where they started, outside the Visitor Centre/Oddball, where they will see projected images on one side of the Oddball's main body.



# Site Specification

- All of the sites in the performance are in the recreation area of the park and have been chosen in close consultation with the RSPB.
- We will be on site 30th August to 10th September.
- Performances are 5th – 9th September, with a dress rehearsal on 4th September.
- Sound and lighting will be localised at each performance site.
- We are working with a sound consultant to set sound levels that don't cause a nuisance and sound levels will be monitored throughout.

# Visitor Experience

**Box office:** We are selling tickets in advance and e-tickets will be scanned on arrival. We will also have a meeting point for people wishing to use the access provision (which includes BSL interpretation, captioning and audio description).

**Toilets:** Additional portable toilets will be brought in, including accessible units and a changing places unit.

## **Catering:**

- There will be 2-3 food vendors serving plant-based food and drink, with no alcohol on sale.
- We have a waste management plan to ensure that all waste is removed from site and recycled or re-used where possible.
- We will also have active and regular litter picking in operation.
- Food vendors will be glass and single use plastic free.

## **Other site users:**

- We will put up notices 2 weeks before the performance about possible disruption and provide information online.
- Signage on performance days will direct people to other routes and volunteers stationed at pathway intersections will advise people of alternative routes during the performance.

# Environment and Sustainability

- Sustainability is a key consideration in the development of our programme, with the environmental impact and production lifecycle assessed and minimised as much as possible.
- Sustainable Arts in Leeds (SAIL) are our Sustainability Partner, acting as our sustainability advisors across all our work.
- Biodiversity and environmental impact assessment have been produced and mitigations implemented in consultation with RSPB.
- Rare birds' nesting and activity will be monitored and adaptive plans implemented to mitigate any impact.
- Our waste management plan ensures that litter is collected regularly and all waste is removed from site and re-used or recycled wherever possible.
- Battery and solar powered generators will be used wherever possible.

# Parking and Travel To Site

- We will be providing all performers and volunteers with a free shuttle bus service each day from Leeds City Centre.
- There is also a free shuttle bus services for audiences, operating from Leeds City Centre and Temple Green park and ride.
- We will be closing Wood Lane each evening from 5.30pm-10.30pm. This is to provide bookable parking for audiences and remove any parking disruption from other local roads. There will be clear signage in place, including diversion signs.
- A pedestrian crossing will be installed across Astley Lane and stewards deployed to ensure visitors are using this.
- There will also be bookable Blue Badge parking and a pick-up and drop-off point at the Visitor Centre car park.
- These combined options have suitable capacity for all audience members.
- As part of our pre-show communication with ticket bookers, they will be told not to park on local residential roads and to be respectful of all neighbouring properties.
- Audience members will leave the site at 9.30pm each evening
- The majority of performers and staff will leave the site by 10.30pm.



Audience parking

Pedestrian Crossing

Toilets

Vendors

Box Office

Bus Stop

Taxi drop-off

Blue Badge



# Site Management, Safety & Security

- Performances will be stewarded by staff and volunteers to ensure the safety of the audience and that audience members do not leave the approved performance areas.
- We will provide 24 hour security for the site between 31st August and 11th September.
- We will create a backstage area along the concrete access road. This will accommodate dressing rooms, a workshop, and stage management office.
- There will be First Aid provision for both rehearsals and performance.
- All activity will be risk assessed and compliant with all current legislation.
- There will be a water safety plan for the event, including the use of a water safety team.
- There will be a sweep of the area once the audience has left.

# Access

Providing visitor experiences that are accessible and inclusive for as many people as possible is a key priority.

We have an in-house Access and Inclusion Officer who has advised us throughout the process on how to make the project as accessible as possible both for performers/participants and audiences.

We will design clear access routes, provide seating and rest spots where needed, provide access volunteers and detailed pre-show information around access.

We are providing:

- BSL interpretation
- Live captioning
- Audio described performances
- Accessible toilets
- Blue Badge parking
- A chill out area
- Assistance dogs are welcome. Dogs must be kept on a lead at all times.



## Event Safety Management Plan (ESMP)

### Nest

St Aidan's RSPB Nature Park

Astley Lane, Leeds, LS26 8AL

30<sup>th</sup> August – 10<sup>th</sup> September

**Event Control: phone number / email**

This number will be monitored at all times during operational hours.

Version 2

[Production@leeds2023.co.uk](mailto:Production@leeds2023.co.uk)

#### DOCUMENT CONTROL

AUTHOR CONTROL				
Name	Version	Action	Sections	Date
Matt Noddings	1			20/06/2023
Tom Reilly	1	Additional info added	All sections	02/08/2023
Tom Reilly	2	Appendices added	S8	08/08/2023

RELEASE CONTROL				
Name	Version	Action	Sections	Date

**CONTENTS**

<b>1</b>	<b>EVENT OVERVIEW .....</b>	<b>3</b>	<b>3.6</b>	<b>Audience Management .....</b>	<b>29</b>
1.1	Event Briefing & Details.....	3	3.7	Sanitation Provision .....	29
1.2	Statement of Intent .....	3	3.8	Security & Crowd Management ..	29
1.3	Event Contacts .....	4	3.9	Medical Provision .....	31
1.4	Licences .....	5	3.10	Adverse Weather .....	32
1.5	Insurances.....	6	3.11	Communication .....	34
1.6	Roles & Responsibilities.....	6	<b>4</b>	<b>TRANSPORT MANAGEMENT PLAN</b>	<b>37</b>
1.7	Hierarchy of Event Management	10	4.1	Vehicles Arriving On Site .....	37
1.8	Schedule .....	11	4.2	Vehicle Movement On Site.....	37
<b>2</b>	<b>METHOD STATEMENTS.....</b>	<b>13</b>	4.3	Public Transport.....	37
2.1	Working At Height.....	13	4.4	Car Parking .....	37
2.2	Construction Design Management	14	4.5	Road Closures .....	38
2.3	Temporary Demountable	16	<b>5</b>	<b>SUSTAINABILITY .....</b>	<b>39</b>
2.4	Electrical, Power & Heating	17	5.1	Waste Management & Materials	39
2.5	Noise Management .....	17	5.2	Pollution & Nuisance.....	39
2.6	Appointment & Behaviour Of	18	5.3	Energy Use & CO2 .....	39
2.7	Lost & Found Children And	18	<b>6</b>	<b>COUNTER TERRORISM .....</b>	<b>40</b>
2.8	Fire Safety.....	19	<b>7</b>	<b>CONTINGENCY AND EMERGENCY</b>	<b>40</b>
2.9	Water Safety.....	21	<b>PLANS .....</b>	<b>40</b>	
<b>3</b>	<b>RISK ASSESSMENT .....</b>	<b>23</b>	7.1	Incident Plans .....	41
3.1	Event Risk Assessments .....	23	7.2	Site Induction, Briefing & Rules ..	49
3.2	Risk Factor Matrix .....	23	<b>8</b>	<b>Appendices .....</b>	<b>51</b>
<b>SITE AND EVENT SAFETY PLANS .....</b>			8.1	Event Risk Assessment .....	51
3.3	VENUE .....	25	8.2	Safeguarding Policy.....	51
3.4	Site design and capacity	27	8.3	Safeguarding Risk Assessment....	51
3.5	Egress Calculations .....	28	8.4	Traffic Management Plan .....	51
			8.5	Site Plans.....	51
			8.6	Nesting Birds Mitigation Plan .....	51
			8.7	Noise Management Plan .....	51

## Objection Matrix

Objection	Addressed in:  Licensing application section / LCC pro forma section	Addressed in:  Event Safety Management Plan section
Other more suitable locations for the event	<i>S5 description of site</i>  <i>S18a-e licensing objectives</i>	<i>S3.3 Venue</i>  <i>S3.4 Site design and capacity calculations</i>  <i>S3.5 Egress calculations</i>  <i>S8.5 Site Plans</i>
Environmental impact and the awareness of climate change	<i>S18a General licensing objectives</i>  <i>S18d The prevention of public nuisance</i>	<i>S5.1-3 Sustainability</i>
Presence of rare nesting birds	<i>S18a General licensing objectives</i>  <i>S18d The prevention of public nuisance</i>	<i>S5.2 Sustainability,</i>  <i>S8.6 Nesting Birds Mitigation Plan</i>
Anti-social behaviour	<i>S18a General licensing objectives</i>  <i>S18b The prevention of crime and disorder</i>  Pro-forma p6-10 <i>Security and Stewards</i>	<i>S3.8 Security and Crowd Management</i>

Litter	<p>S18a <i>General licensing objectives</i></p> <p>S18d <i>The prevention of public nuisance</i></p> <p>Pro-forma P16 <i>Waste Management</i></p>	S5.1 <i>Waste Management Plan</i>
Noise	<p>S18a <i>General licensing objectives</i></p> <p>S18d <i>The prevention of public nuisance</i></p> <p>Pro-forma p14-15 <i>Noise and Vibration</i></p>	<p>S5.2 <i>Pollution &amp; Nuisance,</i></p> <p>S8.7 <i>Noise Management Plan</i></p>
Lighting	<p>S18a <i>General licensing objectives</i></p> <p>S18d <i>The prevention of public nuisance</i></p>	S5.2 <i>Pollution &amp; Nuisance</i>
Water Safety	<p>S18a <i>General licensing objectives</i></p> <p>Pro Forma P10 <i>Public Safety</i></p>	<p>S2.9 <i>Water Safety,</i></p> <p>S8.1 <i>Event Risk Assessment</i></p>
Adverse impact on residents, including; Parking issues, children's mental health	<p>S18a <i>General licensing objectives</i></p> <p>S18d <i>The prevention of public nuisance</i></p> <p>S18e <i>The Protection of Children from harm</i></p>	<p>S4 <i>Transport Management plan</i></p> <p>S5.2 <i>Pollution and Nuisance</i></p> <p>S3.8 <i>Security and Crowd Management</i></p> <p>S8.7 <i>Noise Management Plan</i></p>

**Subject:** PREM/05145/001 - Leeds 2023 Nest Premise License  
**Date:** Wednesday, 9 August 2023 at 08:52:37 British Summer Time  
**From:** Carl Foster  
**To:** alanrobertshaw@hotmail.co.uk  
**CC:** Residents  
**Attachments:** image001.png

Dear Alan Robertshaw,

Thank you for taking the time to review and respond to the above premise license application for our planned theatre production at St Aidan's Nature Park, which we have submitted as Leeds Culture Trust.

I wanted to take the time to write to you and explain our plans in a little more detail and hopefully allay any concerns you may have.

We have submitted this license application as we are planning to stage performances of an immersive, site-specific theatre production 'Nest' in co-production with National Youth Theatre. The show is a timely, urgent and hopeful piece that will showcase world class creative talent and acts as an epic call to action about the future of our planet and the importance of stories.

Nest is a theatre production performed by a cast of over 100 young people from Leeds and beyond. An audience of up to 500 people will be taken on a quest through RSPB St Aidan's Nature Park, exploring themes around nature, family, and the climate crisis. There are four main performance sites around St Aidan's, all restricted to the recreational areas of the park, one at the visitor centre, and at three locations around Bowers Lake. There will be elements of staging, lighting, and sound at these sites.

LEEDS 2023 Year of Culture has been set the mission of delivering a year of creative experiences which connect the people of Leeds and change their relationship with culture for good. Sustainability is a key consideration in the development of the artistic programme, with the environmental impact and production lifecycle assessed and minimised as much as possible.

We appreciate the concerns you have raised in relation to our application. We want to reassure you that we understand the importance of St Aidan's as a Nature Park, and our responsibility to ensure we minimise any impact on neighbours and local wildlife. We have been working closely with the RSPB on the details of the performances. We have taken on board all their advice and will continue to do so throughout the process.

In relation to the specific concerns you have raised, I have provided some information below on measures we are putting in place to address them, and we would welcome any further thoughts from yourself and other residents on these, as we implement these plans. We are keen to work positively and transparently with residents as part of the delivery of this event. As such we held an information evening on 7<sup>th</sup> August for local residents and are holding a follow up session on Tuesday 15<sup>th</sup> August 6pm at Swillington Village Hall. Additionally, we will be establishing a dedicated residents' hotline during the live event period and appointing a member of the Leeds 2023 team to support residents with any concerns.

Please see the information outlined below, and if you would like to meet to discuss any issues in particular, please do let me know.

#### **Wildlife**

- The production has been produced specifically for St Aidan's Nature Park, the creative team have worked on the details for many months and have met with and taken the advice of RSPB.
- Biodiversity and environmental impact assessment have been produced and mitigations implemented in consultation with RSPB.

- Sustainability is a key consideration in the development of our programme, with the environmental impact and production lifecycle assessed and minimised as much as possible.
- Sustainable Arts in Leeds (SAIL) are our Sustainability Partner, acting as our advisors across all our work.
- Locations on site to be used are all part of the recreational areas of the park.
- Rare birds nesting and activity monitoring will be in place and adaptive plans implemented to mitigate any impact.
- Waste management plan ensures that litter is collected regularly and all waste is removed from site and re-used or recycled wherever possible.
- We will be using battery and solar powered generators wherever possible to mitigate both our environmental and noise impacts.

### **Lighting**

- The majority of the production takes place at dusk, therefore there is limited time each day when the lighting will be on.
- The lighting used on the event will be directional and not focused on any of the neighbouring buildings so as to minimise light pollution.
- The performance areas are all in the recreational areas of the park. We have taken and continue to take advice from RSPB as to the presence and location of any nesting birds to ensure that none of our lighting or infrastructure impacts them.

### **Water Safety**

- We have a water safety plan in place to help keep all those associated with the show safe.
- Audience proximity to the water has been taken into account when planning the performance acts to ensure the audience is safely away from the water's edge with low risk of falling into the water.
- We will have a dedicated water safety response team in place.
- Stewards will observe the audience to ensure they stay on the paths and do not stray towards the water's edge. They will be in communication with the Event Management Team in case of any need for water safety response.
- Stewards will sweep the site post-rehearsals and post-show to ensure no persons are left on site.
- We are aware of how members of the public use Bowers lake including cold water swimmers and this has been built into our planning to help ensure the safety of all site users.

### **Noise Levels**

- The event takes place from 7.30pm and is expected to finish by 9.30pm each evening.
- The content and format of the performance means that there will not be constant loud sounds or music. The amplified sound will be a mix of soundscapes, choral music, some amplified dialogue and musical instruments.
- The promenade style of performance means that periods of sound in a location will be limited to around 20 minutes.
- We have engaged third party noise consultants to produce and implement a noise management plan, which includes the following:
  - We will monitor sound levels internally and externally to the park and be able to adjust levels if readings are too high.
  - The sound systems being used will be directional and have been designed specifically for the event.
  - The production is a play, and as such, music is not a major part of it, this means most of the sound will be dialogue and some sound effects.
  - Noise propagation, rehearsals and speaker testing will be required, from 1<sup>st</sup> September onwards, in the days leading up to the event to facilitate delivery of the show. All speaker noise related activity during this period will have a hard curfew imposed of 9.30pm each night.

I hope the information provided above is helpful to you, and that the knowledge that we have applied for



a time-limited premises license, only allowing us to present the production of Nest on these specific dates at St Aidan's Nature Park goes some way to allaying your concerns. We want to deliver a spectacular and memorable moment for Leeds and the wider West Yorkshire community. We hope to welcome you and your neighbours to the show and we greatly appreciate your patience and understanding as we work to deliver this.

Thank you for taking the time to read this letter and I hope I have gone at least some way to allaying any concerns you may have. If you would like to discuss our plans further, please do not hesitate to get in touch.

With best wishes,

Carl

**Carl Foster** (he/him)  
Head of Visitor Experience

*My working days are Mon, Tues, Wed and Fri.*



---

## Letting Culture Loose

[@leeds\\_2023](#)

[www.leeds2023.co.uk](http://www.leeds2023.co.uk)

---

2 Brewery Place, Brewery Wharf, Leeds, LS10 1NE  
Company number: 10674601  
Charity number: 1184883

**Subject:** PREM/05145/001 - Leeds 2023 Nest Premise License  
**Date:** Wednesday, 9 August 2023 at 08:53:15 British Summer Time  
**From:** Carl Foster  
**To:** obrieni@sky.com  
**CC:** Residents  
**Attachments:** image001.png

Dear Ian O'Brien,

Thank you for taking the time to review and respond to the above premise license application for our planned theatre production at St Aidan's Nature Park, which we have submitted as Leeds Culture Trust.

I wanted to take the time to write to you and explain our plans in a little more detail and hopefully allay any concerns you may have.

We have submitted this license application as we are planning to stage performances of an immersive, site-specific theatre production 'Nest' in co-production with National Youth Theatre. The show is a timely, urgent and hopeful piece that will showcase world class creative talent and acts as an epic call to action about the future of our planet and the importance of stories.

Nest is a theatre production performed by a cast of over 100 young people from Leeds and beyond. An audience of up to 500 people will be taken on a quest through RSPB St Aidan's Nature Park, exploring themes around nature, family, and the climate crisis. There are four main performance sites around St Aidan's, all restricted to the recreational areas of the park, one at the visitor centre, and at three locations around Bowers Lake. There will be elements of staging, lighting, and sound at these sites.

LEEDS 2023 Year of Culture has been set the mission of delivering a year of creative experiences which connect the people of Leeds and change their relationship with culture for good. Sustainability is a key consideration in the development of the artistic programme, with the environmental impact and production lifecycle assessed and minimised as much as possible.

We appreciate the concerns you have raised in relation to our application, particularly given the proximity of your home address to St Aidan's nature park. We want to reassure you that we understand the importance of St Aidan's as a Nature Park, and our responsibility to ensure we minimise any impact on neighbours and local wildlife. We have been working closely with the RSPB on the details of the performances. We have taken on board all their advice and will continue to do so throughout the process.

In relation to the specific concerns you have raised, I have provided some information below on measures we are putting in place to address them, and we would welcome any further thoughts from yourself and other residents on these, as we implement these plans. We are keen to work positively and transparently with residents as part of the delivery of this event. As such we held an information evening on 7<sup>th</sup> August for local residents and are holding a follow up session on Tuesday 15<sup>th</sup> August 6pm at Swillington Village Hall. Additionally, we will be establishing a dedicated residents' hotline during the live event period and appointing a member of the Leeds 2023 team to support residents with any concerns.

Please see the information outlined below, and if you would like to meet to discuss any issues in particular, please do let me know.

**Traffic and impact on the local neighbourhood**

- The audience profile is anticipated to be a family audience with an interest in the local area, who are environmentally conscious, have an interest in theatre and will behave respectfully to their surroundings. There will be no alcohol on sale at the event.

- We will have a 24-hour security presence on site throughout, to help keep everyone safe in the space and minimise any potential anti-social behaviour.
- We will have sufficient toilet and waste facilities available and will perform regular litter picking each day.
- We recognise the need for a comprehensive Traffic Management plan to deliver this event successfully and minimise inconvenience for attendees and local residents.
- We will be providing all performers and volunteers with a free shuttle bus service each day from Leeds City Centre.
- There is also a free shuttle bus services for audiences, operating from Leeds City Centre and Temple Green park and ride.
- We will be closing Wood Lane each evening from 5.30pm-10.30pm. This is to provide bookable parking for audiences and remove any parking disruption from other local roads. There will be clear signage in place, including diversion signs.
- A pedestrian crossing will be installed across Astley Lane and stewards deployed to ensure visitors are using this.
- There will also be bookable blue badge parking and a pick-up and drop-off point at the visitor centre car park.
- These combined options have suitable capacity for all audience members.
- As part of our pre-show communication with ticket bookers, they will be told not to park on local residential roads and to be respectful of all neighbouring properties.
- Audience related vehicle movements are expected to be limited to 6.30pm-7.30pm and 9.30pm-10pm and the majority of performers and staff will leave the site by 10.30pm.

### Lighting

- The majority of the production takes place at dusk, therefore there is limited time each day when the lighting will be on.
- The lighting used on the event will be directional and not focused on any of the neighbouring buildings so as to minimise light pollution.

### Noise Levels

- The event takes place from 7.30pm and is expected to finish by 9.30pm each evening.
- The content and format of the performance means that there will not be constant loud sounds or music. The amplified sound will be a mix of soundscapes, choral music, some amplified dialogue and musical instruments.
- The promenade style of performance means that periods of sound in a location will be limited to around 20 minutes.
- We have engaged third party noise consultants to produce and implement a noise management plan, which includes the following:
  - We will monitor sound levels internally and externally to the park and be able to adjust levels if readings are too high.
  - The sound systems being used will be directional and have been designed specifically for the event.
  - The production is a play, and as such, music is not a major part of it, this means most of the sound will be dialogue and some sound effects.
  - Noise propagation, rehearsals and speaker testing will be required, from 1<sup>st</sup> September onwards, in the days leading up to the event to facilitate delivery of the show. All speaker noise related activity during this period will have a hard curfew imposed of 9.30pm each night.

I hope the information provided above is helpful to you, and that the knowledge that we have applied for a time-limited premises license, only allowing us to present the production of Nest on these specific dates at St Aidan's Nature Park goes some way to allaying your concerns. We want to deliver a spectacular and memorable moment for Leeds and the wider West Yorkshire community. We hope to welcome you and your neighbours to the show and we greatly appreciate your patience and understanding as we work to

deliver this.

Thank you for taking the time to read this letter and I hope I have gone at least some way to allaying any concerns you may have. If you would like to discuss our plans further, please do not hesitate to get in touch.

With best wishes,

Carl

**Carl Foster** (he/him)  
Head of Visitor Experience

*My working days are Mon, Tues, Wed and Fri.*



---

## Letting Culture Loose

[@leeds\\_2023](#)

[www.leeds2023.co.uk](http://www.leeds2023.co.uk)

---

2 Brewery Place, Brewery Wharf, Leeds, LS10 1NE

Company number: 10674601

Charity number: 1184883

**Subject:** PREM/05145/001 - Leeds 2023 Nest Premise License  
**Date:** Wednesday, 9 August 2023 at 08:50:22 British Summer Time  
**From:** Carl Foster  
**To:** beckcottagebirder@yahoo.com  
**CC:** Residents  
**Attachments:** image001.png

Dear John Martin,

Thank you for taking the time to review and respond to the above premise license application for our planned theatre production at St Aidan's Nature Park, which we have submitted as Leeds Culture Trust.

I wanted to take the time to write to you and explain our plans in a little more detail and hopefully allay any concerns you may have.

We have submitted this license application as we are planning to stage performances of an immersive, site-specific theatre production 'Nest' in co-production with National Youth Theatre. The show is a timely, urgent and hopeful piece that will showcase world class creative talent and acts as an epic call to action about the future of our planet and the importance of stories.

Nest is a theatre production performed by a cast of over 100 young people from Leeds and beyond. An audience of up to 500 people will be taken on a quest through RSPB St Aidan's Nature Park, exploring themes around nature, family, and the climate crisis. There are four main performance sites around St Aidan's, all restricted to the recreational areas of the park, one at the visitor centre, and at three locations around Bowers Lake. There will be elements of staging, lighting, and sound at these sites.

LEEDS 2023 Year of Culture has been set the mission of delivering a year of creative experiences which connect the people of Leeds and change their relationship with culture for good. Sustainability is a key consideration in the development of the artistic programme, with the environmental impact and production lifecycle assessed and minimised as much as possible.

We appreciate the concerns you have raised in relation to our application. We want to reassure you that we understand the importance of St Aidan's as a Nature Park, and our responsibility to ensure we minimise any impact on neighbours and local wildlife. We have been working closely with the RSPB on the details of the performances. We have taken on board all their advice and will continue to do so throughout the process.

In relation to the specific concerns you have raised, I have provided some information below on measures we are putting in place to address them, and we would welcome any further thoughts from yourself and other residents on these, as we implement these plans. We are keen to work positively and transparently with residents as part of the delivery of this event. As such we held an information evening on 7<sup>th</sup> August for local residents and are holding a follow up session on Tuesday 15<sup>th</sup> August 6pm at Swillington Village Hall. Additionally, we will be establishing a dedicated residents' hotline during the live event period and appointing a member of the Leeds 2023 team to support residents with any concerns.

Please see the information outlined below, and if you would like to meet to discuss any issues in particular, please do let me know.

#### **Wildlife**

- The production has been produced specifically for St Aidan's Nature Park, the creative team have worked on the details for many months and have met with and taken the advice of RSPB.
- Biodiversity and environmental impact assessment have been produced and mitigations implemented in consultation with RSPB.

- Sustainability is a key consideration in the development of our programme, with the environmental impact and production lifecycle assessed and minimised as much as possible.
- Sustainable Arts in Leeds (SAIL) are our Sustainability Partner, acting as our advisors across all our work.
- Locations on site to be used are all part of the recreational areas of the park.
- Rare birds nesting and activity monitoring will be in place and adaptive plans implemented to mitigate any impact.
- Waste management plan ensures that litter is collected regularly and all waste is removed from site and re-used or recycled wherever possible.
- We will be using battery and solar powered generators wherever possible to mitigate both our environmental and noise impacts.

### **Lighting**

- The majority of the production takes place at dusk, therefore there is limited time each day when the lighting will be on.
- The lighting used on the event will be directional and not focused on any of the neighbouring buildings so as to minimise light pollution.
- The performance areas are all in the recreational areas of the park. We have taken and continue to take advice from RSPB as to the presence and location of any nesting birds to ensure that none of our lighting or infrastructure impacts them.

### **Water Safety**

- We have a water safety plan in place to help keep all those associated with the show safe.
- Audience proximity to the water has been taken into account when planning the performance acts to ensure the audience is safely away from the water's edge with low risk of falling into the water.
- We will have a dedicated water safety response team in place.
- Stewards will observe the audience to ensure they stay on the paths and do not stray towards the water's edge. They will be in communication with the Event Management Team in case of any need for water safety response.
- Stewards will sweep the site post-rehearsals and post-show to ensure no persons are left on site.
- We are aware of how members of the public use Bowers lake including cold water swimmers and this has been built into our planning to help ensure the safety of all site users.
- Additionally there will be no alcohol on sale at the event.

### **Noise Levels**

- The event takes place from 7.30pm and is expected to finish by 9.30pm each evening.
- The content and format of the performance means that there will not be constant loud sounds or music. The amplified sound will be a mix of soundscapes, choral music, some amplified dialogue and musical instruments.
- The promenade style of performance means that periods of sound in a location will be limited to around 20 minutes.
- We have engaged third party noise consultants to produce and implement a noise management plan, which includes the following:
  - We will monitor sound levels internally and externally to the park and be able to adjust levels if readings are too high.
  - The sound systems being used will be directional and have been designed specifically for the event.
  - The production is a play, and as such, music is not a major part of it, this means most of the sound will be dialogue and some sound effects.
  - Noise propagation, rehearsals and speaker testing will be required, from 1<sup>st</sup> September onwards, in the days leading up to the event to facilitate delivery of the show. All speaker noise related activity during this period will have a hard curfew imposed of 9.30pm each night.

I hope the information provided above is helpful to you, and that the knowledge that we have applied for a time-limited premises license, only allowing us to present the production of Nest on these specific dates at St Aidan's Nature Park goes some way to allaying your concerns. We want to deliver a spectacular and memorable moment for Leeds and the wider West Yorkshire community. We hope to welcome you and your neighbours to the show and we greatly appreciate your patience and understanding as we work to deliver this.

Thank you for taking the time to read this letter and I hope I have gone at least some way to allaying any concerns you may have. If you would like to discuss our plans further, please do not hesitate to get in touch.

With best wishes,

Carl

**Carl Foster** (he/him)  
Head of Visitor Experience

*My working days are Mon, Tues, Wed and Fri.*



---

## Letting Culture Loose

[@leeds\\_2023](#)

[www.leeds2023.co.uk](http://www.leeds2023.co.uk)

---

2 Brewery Place, Brewery Wharf, Leeds, LS10 1NE

Company number: 10674601

Charity number: 1184883

**Subject:** PREM/05145/001 - Leeds 2023 Nest Premise License  
**Date:** Wednesday, 9 August 2023 at 08:52:03 British Summer Time  
**From:** Carl Foster  
**To:** martin.fine1@btopenworld.com  
**CC:** Residents  
**Attachments:** image001.png

Dear Joan and Martin Fine,

Thank you for taking the time to review and respond to the above premise license application for our planned theatre production at St Aidan's Nature Park, which we have submitted as Leeds Culture Trust.

I wanted to take the time to write to you and explain our plans in a little more detail and hopefully allay any concerns you may have.

We have submitted this license application as we are planning to stage performances of an immersive, site-specific theatre production 'Nest' in co-production with National Youth Theatre. The show is a timely, urgent and hopeful piece that will showcase world class creative talent and acts as an epic call to action about the future of our planet and the importance of stories.

Nest is a theatre production performed by a cast of over 100 young people from Leeds and beyond. An audience of up to 500 people will be taken on a quest through RSPB St Aidan's Nature Park, exploring themes around nature, family, and the climate crisis. There are four main performance sites around St Aidan's, all restricted to the recreational areas of the park, one at the visitor centre, and at three locations around Bowers Lake. There will be elements of staging, lighting, and sound at these sites.

LEEDS 2023 Year of Culture has been set the mission of delivering a year of creative experiences which connect the people of Leeds and change their relationship with culture for good. Sustainability is a key consideration in the development of the artistic programme, with the environmental impact and production lifecycle assessed and minimised as much as possible.

We appreciate the concerns you have raised in relation to our application. We want to reassure you that we understand the importance of St Aidan's as a Nature Park, and our responsibility to ensure we minimise any impact on neighbours and local wildlife. We have been working closely with the RSPB on the details of the performances. We have taken on board all their advice and will continue to do so throughout the process.

In relation to the specific concerns you have raised, I have provided some information below on measures we are putting in place to address them, and we would welcome any further thoughts from yourself and other residents on these, as we implement these plans. We are keen to work positively and transparently with residents as part of the delivery of this event. As such we held an information evening on 7<sup>th</sup> August for local residents and are holding a follow up session on Tuesday 15<sup>th</sup> August 6pm at Swillington Village Hall. Additionally, we will be establishing a dedicated residents' hotline during the live event period and appointing a member of the Leeds 2023 team to support residents with any concerns.

Please see the information outlined below, and if you would like to meet to discuss any issues in particular, please do let me know.

**Traffic and impact on the local neighbourhood**

- The audience profile is anticipated to be a family audience with an interest in the local area, who are environmentally conscious, have an interest in theatre and will behave respectfully to their surroundings. There will be no alcohol on sale at the event.
- We will have a 24-hour security presence on site throughout, to help keep everyone safe in the



space and minimise any potential anti-social behaviour.

- We will have sufficient toilet and waste facilities available and will perform regular litter picking each day.
- We recognise the need for a comprehensive Traffic Management plan to deliver this event successfully and minimise inconvenience for attendees and local residents.
- We will be providing all performers and volunteers with a free shuttle bus service each day from Leeds City Centre.
- There is also a free shuttle bus services for audiences, operating from Leeds City Centre and Temple Green park and ride.
- We will be closing Wood Lane each evening from 5.30pm-10.30pm. This is to provide bookable parking for audiences and remove any parking disruption from other local roads. There will be clear signage in place, including diversion signs.
- A pedestrian crossing will be installed across Astley Lane and stewards deployed to ensure visitors are using this.
- There will also be bookable blue badge parking and a pick-up and drop-off point at the visitor centre car park.
- These combined options have suitable capacity for all audience members.
- As part of our pre-show communication with ticket bookers, they will be told not to park on local residential roads and to be respectful of all neighbouring properties.
- Audience related vehicle movements are expected to be limited to 6.30pm-7.30pm and 9.30pm-10pm and the majority of performers and staff will leave the site by 10.30pm.

#### **Wildlife**

- The production has been produced specifically for St Aidan's Nature Park, the creative team have worked on the details for many months and have met with and taken the advice of RSPB.
- Biodiversity and environmental impact assessment have been produced and mitigations implemented in consultation with RSPB.
- Sustainability is a key consideration in the development of our programme, with the environmental impact and production lifecycle assessed and minimised as much as possible.
- Sustainable Arts in Leeds (SAIL) are our Sustainability Partner, acting as our advisors across all our work.
- Locations on site to be used are all part of the recreational areas of the park.
- Rare birds nesting and activity monitoring will be in place and adaptive plans implemented to mitigate any impact.
- Waste management plan ensures that litter is collected regularly and all waste is removed from site and re-used or recycled wherever possible.
- We will be using battery and solar powered generators wherever possible to mitigate both our environmental and noise impacts.

#### **Noise Levels**

- The event takes place from 7.30pm and is expected to finish by 9.30pm each evening.
- The content and format of the performance means that there will not be constant loud sounds or music. The amplified sound will be a mix of soundscapes, choral music, some amplified dialogue and musical instruments.
- The promenade style of performance means that periods of sound in a location will be limited to around 20 minutes.
- We have engaged third party noise consultants to produce and implement a noise management plan, which includes the following:
  - We will monitor sound levels internally and externally to the park and be able to adjust levels if readings are too high.
  - The sound systems being used will be directional and have been designed specifically for the event.
  - The production is a play, and as such, music is not a major part of it, this means most of the sound will be dialogue and some sound effects.

- Noise propagation, rehearsals and speaker testing will be required, from 1<sup>st</sup> September onwards, in the days leading up to the event to facilitate delivery of the show. All speaker noise related activity during this period will have a hard curfew imposed of 9.30pm each night.

I hope the information provided above is helpful to you, and that the knowledge that we have applied for a time-limited premises license, only allowing us to present the production of Nest on these specific dates at St Aidan's Nature Park goes some way to allaying your concerns. We want to deliver a spectacular and memorable moment for Leeds and the wider West Yorkshire community. We hope to welcome you and your neighbours to the show and we greatly appreciate your patience and understanding as we work to deliver this.

Thank you for taking the time to read this letter and I hope I have gone at least some way to allaying any concerns you may have. If you would like to discuss our plans further, please do not hesitate to get in touch.

With best wishes,

Carl

**Carl Foster** (he/him)  
Head of Visitor Experience

*My working days are Mon, Tues, Wed and Fri.*



---

## Letting Culture Loose

[@leeds\\_2023](#)

[www.leeds2023.co.uk](http://www.leeds2023.co.uk)

---

2 Brewery Place, Brewery Wharf, Leeds, LS10 1NE

Company number: 10674601

Charity number: 1184883

**Subject:** PREM/05145/001 - Leeds 2023 Nest Premise License  
**Date:** Wednesday, 9 August 2023 at 08:49:26 British Summer Time  
**From:** Carl Foster  
**To:** mickcudworth@aol.com  
**CC:** Residents  
**Attachments:** image001.png

Dear Michael Cudworth,

Thank you for taking the time to review and respond to the above premise license application for our planned theatre production at St Aidan's Nature Park, which we have submitted as Leeds Culture Trust.

I wanted to take the time to write to you and explain our plans in a little more detail and hopefully allay any concerns you may have.

We have submitted this license application as we are planning to stage performances of an immersive, site-specific theatre production 'Nest' in co-production with National Youth Theatre. The show is a timely, urgent and hopeful piece that will showcase world class creative talent and acts as an epic call to action about the future of our planet and the importance of stories.

Nest is a theatre production performed by a cast of over 100 young people from Leeds and beyond. An audience of up to 500 people will be taken on a quest through RSPB St Aidan's Nature Park, exploring themes around nature, family, and the climate crisis. There are four main performance sites around St Aidan's, all restricted to the recreational areas of the park, one at the visitor centre, and at three locations around Bowers Lake. There will be elements of staging, lighting, and sound at these sites.

LEEDS 2023 Year of Culture has been set the mission of delivering a year of creative experiences which connect the people of Leeds and change their relationship with culture for good. Sustainability is a key consideration in the development of the artistic programme, with the environmental impact and production lifecycle assessed and minimised as much as possible.

We appreciate the concerns you have raised in relation to our application. We want to reassure you that we understand the importance of St Aidan's as a Nature Park, and our responsibility to ensure we minimise any impact on neighbours and local wildlife. We have been working closely with the RSPB on the details of the performances. We have taken on board all their advice and will continue to do so throughout the process.

In relation to the specific concerns you have raised, I have provided some information below on measures we are putting in place to address them, and we would welcome any further thoughts from yourself and other residents on these, as we implement these plans. We are keen to work positively and transparently with residents as part of the delivery of this event. As such we held an information evening on 7<sup>th</sup> August for local residents and are holding a follow up session on Tuesday 15<sup>th</sup> August 6pm at Swillington Village Hall. Additionally, we will be establishing a dedicated residents' hotline during the live event period and appointing a member of the Leeds 2023 team to support residents with any concerns.

Please see the information outlined below, and if you would like to meet to discuss any issues in particular, please do let me know.

**Traffic and impact on the local neighbourhood**

- The audience profile is anticipated to be a family audience with an interest in the local area, who are environmentally conscious, have an interest in theatre and will behave respectfully to their surroundings. There will be no alcohol on sale at the event.
- We will have a 24-hour security presence on site throughout, to help keep everyone safe in the

space and minimise any potential anti-social behaviour.

- We will have sufficient toilet and waste facilities available and will perform regular litter picking each day.
- We recognise the need for a comprehensive Traffic Management plan to deliver this event successfully and minimise inconvenience for attendees and local residents.
- We will be providing all performers and volunteers with a free shuttle bus service each day from Leeds City Centre.
- There is also a free shuttle bus services for audiences, operating from Leeds City Centre and Temple Green park and ride.
- We will be closing Wood Lane each evening from 5.30pm-10.30pm. This is to provide bookable parking for audiences and remove any parking disruption from other local roads. There will be clear signage in place, including diversion signs.
- A pedestrian crossing will be installed across Astley Lane and stewards deployed to ensure visitors are using this.
- There will also be bookable blue badge parking and a pick-up and drop-off point at the visitor centre car park.
- These combined options have suitable capacity for all audience members.
- As part of our pre-show communication with ticket bookers, they will be told not to park on local residential roads and to be respectful of all neighbouring properties.
- Audience related vehicle movements are expected to be limited to 6.30pm-7.30pm and 9.30pm-10pm and the majority of performers and staff will leave the site by 10.30pm.

#### **Wildlife**

- The production has been produced specifically for St Aidan's Nature Park, the creative team have worked on the details for many months and have met with and taken the advice of RSPB.
- Biodiversity and environmental impact assessment have been produced and mitigations implemented in consultation with RSPB.
- Sustainability is a key consideration in the development of our programme, with the environmental impact and production lifecycle assessed and minimised as much as possible.
- Sustainable Arts in Leeds (SAIL) are our Sustainability Partner, acting as our advisors across all our work.
- Locations on site to be used are all part of the recreational areas of the park.
- Rare birds nesting and activity monitoring will be in place and adaptive plans implemented to mitigate any impact.
- Waste management plan ensures that litter is collected regularly and all waste is removed from site and re-used or recycled wherever possible.
- We will be using battery and solar powered generators wherever possible to mitigate both our environmental and noise impacts.

#### **Lighting**

- The majority of the production takes place at dusk, therefore there is limited time each day when the lighting will be on.
- The lighting used on the event will be directional and not focused on any of the neighbouring buildings so as to minimise light pollution.
- The performance areas are all in the recreational areas of the park. We have taken and continue to take advice from RSPB as to the presence and location of any nesting birds to ensure that none of our lighting or infrastructure impacts them.

#### **Noise Levels**

- The event takes place from 7.30pm and is expected to finish by 9.30pm each evening.
- The content and format of the performance means that there will not be constant loud sounds or music. The amplified sound will be a mix of soundscapes, choral music, some amplified dialogue and musical instruments.
- The promenade style of performance means that periods of sound in a location will be limited to around 20 minutes.

- We have engaged third party noise consultants to produce and implement a noise management plan, which includes the following:
  - We will monitor sound levels internally and externally to the park and be able to adjust levels if readings are too high.
  - The sound systems being used will be directional and have been designed specifically for the event.
  - The production is a play, and as such, music is not a major part of it, this means most of the sound will be dialogue and some sound effects.
  - Noise propagation, rehearsals and speaker testing will be required, from 1<sup>st</sup> September onwards, in the days leading up to the event to facilitate delivery of the show. All speaker noise related activity during this period will have a hard curfew imposed of 9.30pm each night.

I hope the information provided above is helpful to you, and that the knowledge that we have applied for a time-limited premises license, only allowing us to present the production of Nest on these specific dates at St Aidan's Nature Park goes some way to allaying your concerns. We want to deliver a spectacular and memorable moment for Leeds and the wider West Yorkshire community. We hope to welcome you and your neighbours to the show and we greatly appreciate your patience and understanding as we work to deliver this.

Thank you for taking the time to read this letter and I hope I have gone at least some way to allaying any concerns you may have. If you would like to discuss our plans further, please do not hesitate to get in touch.

With best wishes,

Carl

**Carl Foster** (he/him)  
Head of Visitor Experience

*My working days are Mon, Tues, Wed and Fri.*



---

**Letting Culture Loose**

[@leeds\\_2023](#)

[www.leeds2023.co.uk](http://www.leeds2023.co.uk)

---

2 Brewery Place, Brewery Wharf, Leeds, LS10 1NE  
Company number: 10674601  
Charity number: 1184883

**Subject:** PREM/05145/001 - Leeds 2023 Nest Premise License  
**Date:** Wednesday, 9 August 2023 at 08:51:39 British Summer Time  
**From:** Carl Foster  
**To:** birderpete@yahoo.co.uk  
**CC:** Residents  
**Attachments:** image001.png

Dear Peter Griffin,

Thank you for taking the time to review and respond to the above premise license application for our planned theatre production at St Aidan's Nature Park, which we have submitted as Leeds Culture Trust.

I wanted to take the time to write to you and explain our plans in a little more detail and hopefully allay any concerns you may have.

We have submitted this license application as we are planning to stage performances of an immersive, site-specific theatre production 'Nest' in co-production with National Youth Theatre. The show is a timely, urgent and hopeful piece that will showcase world class creative talent and acts as an epic call to action about the future of our planet and the importance of stories.

Nest is a theatre production performed by a cast of over 100 young people from Leeds and beyond. An audience of up to 500 people will be taken on a quest through RSPB St Aidan's Nature Park, exploring themes around nature, family, and the climate crisis. There are four main performance sites around St Aidan's, all restricted to the recreational areas of the park, one at the visitor centre, and at three locations around Bowers Lake. There will be elements of staging, lighting, and sound at these sites.

LEEDS 2023 Year of Culture has been set the mission of delivering a year of creative experiences which connect the people of Leeds and change their relationship with culture for good. Sustainability is a key consideration in the development of the artistic programme, with the environmental impact and production lifecycle assessed and minimised as much as possible.

We appreciate the concerns you have raised in relation to our application. We want to reassure you that we understand the importance of St Aidan's as a Nature Park, and our responsibility to ensure we minimise any impact on neighbours and local wildlife. We have been working closely with the RSPB on the details of the performances. We have taken on board all their advice and will continue to do so throughout the process.

In relation to the specific concerns you have raised, I have provided some information below on measures we are putting in place to address them, and we would welcome any further thoughts from yourself and other residents on these, as we implement these plans. We are keen to work positively and transparently with residents as part of the delivery of this event. As such we held an information evening on 7<sup>th</sup> August for local residents and are holding a follow up session on Tuesday 15<sup>th</sup> August 6pm at Swillington Village Hall. Additionally, we will be establishing a dedicated residents' hotline during the live event period and appointing a member of the Leeds 2023 team to support residents with any concerns.

Please see the information outlined below, and if you would like to meet to discuss any issues in particular, please do let me know.

#### **Wildlife**

- The production has been produced specifically for St Aidan's Nature Park, the creative team have worked on the details for many months and have met with and taken the advice of RSPB.
- Biodiversity and environmental impact assessment have been produced and mitigations implemented in consultation with RSPB.

- Sustainability is a key consideration in the development of our programme, with the environmental impact and production lifecycle assessed and minimised as much as possible.
- Sustainable Arts in Leeds (SAIL) are our Sustainability Partner, acting as our advisors across all our work.
- Locations on site to be used are all part of the recreational areas of the park.
- Rare birds nesting and activity monitoring will be in place and adaptive plans implemented to mitigate any impact.
- Waste management plan ensures that litter is collected regularly and all waste is removed from site and re-used or recycled wherever possible.
- We will be using battery and solar powered generators wherever possible to mitigate both our environmental and noise impacts.

### Lighting

- The majority of the production takes place at dusk, therefore there is limited time each day when the lighting will be on.
- The lighting used on the event will be directional and not focused on any of the neighbouring buildings so as to minimise light pollution.
- The performance areas are all in the recreational areas of the park. We have taken and continue to take advice from RSPB as to the presence and location of any nesting birds to ensure that none of our lighting or infrastructure impacts them.

### Noise Levels

- The event takes place from 7.30pm and is expected to finish by 9.30pm each evening.
- The content and format of the performance means that there will not be constant loud sounds or music. The amplified sound will be a mix of soundscapes, choral music, some amplified dialogue and musical instruments.
- The promenade style of performance means that periods of sound in a location will be limited to around 20 minutes.
- We have engaged third party noise consultants to produce and implement a noise management plan, which includes the following:
  - We will monitor sound levels internally and externally to the park and be able to adjust levels if readings are too high.
  - The sound systems being used will be directional and have been designed specifically for the event.
  - The production is a play, and as such, music is not a major part of it, this means most of the sound will be dialogue and some sound effects.
  - Noise propagation, rehearsals and speaker testing will be required, from 1<sup>st</sup> September onwards, in the days leading up to the event to facilitate delivery of the show. All speaker noise related activity during this period will have a hard curfew imposed of 9.30pm each night.

I hope the information provided above is helpful to you, and that the knowledge that we have applied for a time-limited premises license, only allowing us to present the production of Nest on these specific dates at St Aidan's Nature Park goes some way to allaying your concerns. We want to deliver a spectacular and memorable moment for Leeds and the wider West Yorkshire community. We hope to welcome you and your neighbours to the show and we greatly appreciate your patience and understanding as we work to deliver this.

Thank you for taking the time to read this letter and I hope I have gone at least some way to allaying any concerns you may have. If you would like to discuss our plans further, please do not hesitate to get in touch.

With best wishes,

Carl

**Carl Foster** (he/him)  
Head of Visitor Experience

*My working days are Mon, Tues, Wed and Fri.*

---



---

## Letting Culture Loose

[@leeds\\_2023](#)

[www.leeds2023.co.uk](http://www.leeds2023.co.uk)

---

2 Brewery Place, Brewery Wharf, Leeds, LS10 1NE

Company number: 10674601

Charity number: 1184883



**Subject:** PREM/05145/001 - Leeds 2023 Nest Premise License  
**Date:** Wednesday, 9 August 2023 at 08:51:10 British Summer Time  
**From:** Carl Foster  
**To:** suenagle56@yahoo.co.uk  
**CC:** Residents  
**Attachments:** image001.png

Dear Sue Nagle,

Thank you for taking the time to review and respond to the above premise license application for our planned theatre production at St Aidan's Nature Park, which we have submitted as Leeds Culture Trust.

I wanted to take the time to write to you and explain our plans in a little more detail and hopefully allay any concerns you may have.

We have submitted this license application as we are planning to stage performances of an immersive, site-specific theatre production 'Nest' in co-production with National Youth Theatre. The show is a timely, urgent and hopeful piece that will showcase world class creative talent and acts as an epic call to action about the future of our planet and the importance of stories.

Nest is a theatre production performed by a cast of over 100 young people from Leeds and beyond. An audience of up to 500 people will be taken on a quest through RSPB St Aidan's Nature Park, exploring themes around nature, family, and the climate crisis. There are four main performance sites around St Aidan's, all restricted to the recreational areas of the park, one at the visitor centre, and at three locations around Bowers Lake. There will be elements of staging, lighting, and sound at these sites.

LEEDS 2023 Year of Culture has been set the mission of delivering a year of creative experiences which connect the people of Leeds and change their relationship with culture for good. Sustainability is a key consideration in the development of the artistic programme, with the environmental impact and production lifecycle assessed and minimised as much as possible.

We appreciate the concerns you have raised in relation to our application, particularly given the proximity of your home address to St Aidan's nature park. We want to reassure you that we understand the importance of St Aidan's as a Nature Park, and our responsibility to ensure we minimise any impact on neighbours and local wildlife. We have been working closely with the RSPB on the details of the performances. We have taken on board all their advice and will continue to do so throughout the process.

In relation to the specific concerns you have raised, I have provided some information below on measures we are putting in place to address them, and we would welcome any further thoughts from yourself and other residents on these, as we implement these plans. We are keen to work positively and transparently with residents as part of the delivery of this event. As such we held an information evening on 7<sup>th</sup> August for local residents and are holding a follow up session on Tuesday 15<sup>th</sup> August 6pm at Swillington Village Hall. Additionally, we will be establishing a dedicated residents' hotline during the live event period and appointing a member of the Leeds 2023 team to support residents with any concerns.

Please see the information outlined below, and if you would like to meet to discuss any issues in particular, please do let me know.

**Traffic and impact on the local neighbourhood**

- The audience profile is anticipated to be a family audience with an interest in the local area, who are environmentally conscious, have an interest in theatre and will behave respectfully to their surroundings. There will be no alcohol on sale at the event.

- We will have a 24-hour security presence on site throughout, to help keep everyone safe in the space and minimise any potential anti-social behaviour.
- We will have sufficient toilet and waste facilities available and will perform regular litter picking each day.
- We recognise the need for a comprehensive Traffic Management plan to deliver this event successfully and minimise inconvenience for attendees and local residents.
- We will be providing all performers and volunteers with a free shuttle bus service each day from Leeds City Centre.
- There is also a free shuttle bus services for audiences, operating from Leeds City Centre and Temple Green park and ride.
- We will be closing Wood Lane each evening from 5.30pm-10.30pm. This is to provide bookable parking for audiences and remove any parking disruption from other local roads. There will be clear signage in place, including diversion signs.
- A pedestrian crossing will be installed across Astley Lane and stewards deployed to ensure visitors are using this.
- There will also be bookable blue badge parking and a pick-up and drop-off point at the visitor centre car park.
- These combined options have suitable capacity for all audience members.
- As part of our pre-show communication with ticket bookers, they will be told not to park on local residential roads and to be respectful of all neighbouring properties.
- Audience related vehicle movements are expected to be limited to 6.30pm-7.30pm and 9.30pm-10pm and the majority of performers and staff will leave the site by 10.30pm.

### Wildlife

- The production has been produced specifically for St Aidan's Nature Park, the creative team have worked on the details for many months and have met with and taken the advice of RSPB.
- Biodiversity and environmental impact assessment have been produced and mitigations implemented in consultation with RSPB.
- Sustainability is a key consideration in the development of our programme, with the environmental impact and production lifecycle assessed and minimised as much as possible.
- Sustainable Arts in Leeds (SAIL) are our Sustainability Partner, acting as our advisors across all our work.
- Locations on site to be used are all part of the recreational areas of the park.
- Rare birds nesting and activity monitoring will be in place and adaptive plans implemented to mitigate any impact.
- Waste management plan ensures that litter is collected regularly and all waste is removed from site and re-used or recycled wherever possible.
- We will be using battery and solar powered generators wherever possible to mitigate both our environmental and noise impacts.

### Noise Levels

- The event takes place from 7.30pm and is expected to finish by 9.30pm each evening.
- The content and format of the performance means that there will not be constant loud sounds or music. The amplified sound will be a mix of soundscapes, choral music, some amplified dialogue and musical instruments.
- The promenade style of performance means that periods of sound in a location will be limited to around 20 minutes.
- We have engaged third party noise consultants to produce and implement a noise management plan, which includes the following:
  - We will monitor sound levels internally and externally to the park and be able to adjust levels if readings are too high.
  - The sound systems being used will be directional and have been designed specifically for the event.
  - The production is a play, and as such, music is not a major part of it, this means most of the sound will be dialogue and some sound effects.

- Noise propagation, rehearsals and speaker testing will be required, from 1<sup>st</sup> September onwards, in the days leading up to the event to facilitate delivery of the show. All speaker noise related activity during this period will have a hard curfew imposed of 9.30pm each night.

I hope the information provided above is helpful to you, and that the knowledge that we have applied for a time-limited premises license, only allowing us to present the production of Nest on these specific dates at St Aidan's Nature Park goes some way to allaying your concerns. We want to deliver a spectacular and memorable moment for Leeds and the wider West Yorkshire community. We hope to welcome you and your neighbours to the show and we greatly appreciate your patience and understanding as we work to deliver this.

Thank you for taking the time to read this letter and I hope I have gone at least some way to allaying any concerns you may have. If you would like to discuss our plans further, please do not hesitate to get in touch.

With best wishes,

Carl

**Carl Foster** (he/him)  
Head of Visitor Experience

*My working days are Mon, Tues, Wed and Fri.*



---

## Letting Culture Loose

[@leeds\\_2023](#)

[www.leeds2023.co.uk](http://www.leeds2023.co.uk)

---

2 Brewery Place, Brewery Wharf, Leeds, LS10 1NE  
Company number: 10674601  
Charity number: 1184883

## Stakeholder engagement

### RSPB

- Regular meetings with local RSPB team since early 2022 to be able to shape the production around the site.
- Meetings held with their national legal and senior team to discuss details of the production.
- Engaged with their Ornithologists on the biodiversity assessment.

### Leeds City Council (LCC)

- **City Readiness board**, has been meeting since early 2022 with senior representatives from LCC and Leeds Culture Trust (LCT) to oversee the delivery of the year of culture. **The Planning and Feasibility sub-group** also meets monthly and focuses on the more detailed plans and operations for projects. It includes Representatives from Parks, Highways, Emergency Planning and Resilience, Asset Management, Entertainment Licensing, Child Licensing and other functional areas.
- LCT is engaging with the **Safety Advisory Group** process, with a detailed Event Safety Management Plan having been submitted ahead of a SAG meeting on the 9<sup>th</sup> of August.
- There are regular meetings between the LCT Producing and Production teams and the LCC Parks team, where more detailed specific information about the use of parks and green spaces is discussed. Nest has been on the agenda at those meetings for several months.
- Senior representatives from LCT attend LCC scrutiny meetings to feed back on the progress of the year of culture and to answer questions from elected members.

### Residents

- One residents' session has been held in Swillington Village Hall, along with another scheduled for the 15<sup>th</sup> August.
- Local residents received a leaflet through their door inviting them to attend the residents' session and providing them with overview information about the production.
- Information has been posted to online community groups about the event.

### Other stakeholders

- Sustainability of the Arts in Leeds (SAIL) are LCT's partner on sustainability, and have advised on the project, produced sustainability audits, impact assessment and the biodiversity assessment
- The creative team were engaged early to be able to respond to the site and the feedback from LCC Parks and the RSPB.
- LCT Attended RSPB stakeholder meeting on 27th July to hear feedback from groups who use the site, including for bird watching, wild swimming, fishing, Friends of the Dragline.

## 4 TRANSPORT MANAGEMENT PLAN

This transport management plan will consider:

- The arrival and movement of infrastructure and equipment on site.
- The various arrival modes and methods of the audience members and staff and the likely impact to traffic conditions and public transport capacity.
- Any implications to public roads, access routes or public transport caused.
- Maintaining easy access to neighbouring places for emergency services vehicles.

### 4.1 Vehicles Arriving On Site

- Details of expected deliveries and collections to site will be obtained in advance.
- All vehicles entering site will be issued with a vehicle pass to display in the windscreen. It will contain the site rules for vehicles.
- No public vehicles will be admitted to site.

### 4.2 Vehicle Movement On Site

- Only necessary vehicle movement on site will be permitted during the build period.
- No unauthorised motor vehicles will be permitted to move within the venue during the operational hours, outside of the existing car park and road ways.
- Vehicles will only be operated by competent authorised persons who have read and agreed the site rules for vehicle movement.
- During construction phases where vehicles may be moving on site, all personnel on site are required to wear high visibility clothing.
- A 5mph speed restriction will be in force on site.
- Reversing will be avoided where possible. Banksman will assist all vehicles reversing on site.

### 4.3 Public Transport

We will encourage the audience to travel to site via public transport. Additionally, we are providing free shuttle bus services from Leeds Bus Station and Temple Green Park and Ride.

We are also arranging shuttle buses for performers and volunteers from Leeds Bus Station to St Aidan's. This will start with 2 return buses on Thursday 31 August and increase to 6 return buses from Monday 4 September to Saturday 9 September.

An onsite pick up and drop off point will be installed in the Visitor Centre car park, including a bus turning space.

A taxi pick up and drop off point will also be installed at the Visitor Centre car park.

### 4.4 Car Parking

5 RSPB members parking spaces will be maintained. Bookable blue badge audience parking will be available in the Visitor Centre car park. Staff will be encouraged to car share, take taxis and use the shuttle bus services.

Bookable audience parking will be created on Wood Lane (see Road Closures). We will be communicating regularly by email in the lead up to the event and will discourage anyone traveling by car and not using the transport options we have put in place. Audience members will also be asked not to park on neighbouring streets and asked to be respectful of local residents.

## 4.5 Road Closures

Wood Lane will be closed to the public from Monday 4<sup>th</sup> September to Saturday 9<sup>th</sup> September 17.30 to 22.30, with directional signage installed. Directional parking signage will also be installed. Wood Lane will then be used for bookable audience parking, with entry from the Preston Lane end and egress from the Astley Lane end. A pedestrian crossing will be installed across Astley Lane, with all audience members encouraged to use the existing footpath and crossing to enter the site, supported by event staff and volunteers.

### 4.5.1 Maintaining Emergency services vehicle access

Emergency vehicles will be able to access site 24hours a day. Access through Wood Lane for emergency vehicles with flashing blue lights will be maintained, and any instances recorded in the event log.



## 2.9 Water Safety

The event is taking place near a large body of open water (Bowers Lake) with the audience walking around the lake during the performance.

Audience proximity to the water has been taken into account when planning the performance to ensure the audience is safely away from the water's edge with low risk of falling into the water.

- Stewards will observe audience to ensure they stay on the paths and do not stray towards water's edge. They will be in communication with the Event Management Team in case of any need for water safety response.
- Stewards will sweep the site post-rehearsals and post-show to ensure no persons are left on site.
- A water safety contractor Swim Safety Ltd has been engaged to provide a safety boat including driver during the performances, details of timings are below.
- The performances take place at dusk and twilight, as such safe light levels will be maintained on audience routes.
- Any incidents that occur would be managed through our minor or major incident plan.

### **The water safety risks have been included in our event risk assessment.**

One of the 'Floating Homes' sections takes place in the lake with audience watching from the bank.

Pontoons will be installed in the water with set pieces to represent people's homes.

St Aiden's is often used for open water swimming and currently the RSBP allow swimming at the park but with strict conditions:

- Only swim in Bowers Lake;
- Use one area to get in and out of the water to avoid erosion of other areas;
- Avoid swimming near to the sand martin wall;
- Leave the birdlife alone;
- Only go near the bank at entry point, don't swim too near to the edge;
- No inflatables or stand-up paddle boarding.

We are respecting these conditions and taking further precautions, including appointing a water safety contractor to provide a safety boat and driver from Swim Safety Ltd to be on call 09:00 – 22:00 on 3 and 4 September and 18:00 – 22:00 on 5-9 September. They would respond to any water incidents relating to audiences or performers.

Only competent suppliers with risk assessments assessing work in water will be entering the lake to install the set. Furthermore, we will have buoyancy and lifesaving equipment suitably available on site.



## Nesting Bird Mitigation Plan

Leeds Culture Trust (LCT) is cognisant to the presence of Nesting Birds at St Aidan's and as such, the need to ensure that the Production of Nest does not caused disturbance to them.

LCT has engaged in a constant dialogue with the Royal Society of the Protection of Birds (RSPB) on the specific uses of the site, any advice given by RSPB as to the suitability of activities has been taken into account whilst planning this production.

The sections below detail the requirement to ensure there is no disturbance to rare nesting birds, and how LCT will ensure that that this is the case throughout the production.

### Background

[The Countryside and Wildlife act 1981](#) makes it an offence to intentionally or recklessly:

1. Kill, injure or take any wild bird.
2. Take, damage or destroy the nest of any wild bird while it is in use or being built.
3. Take or destroy the egg of any wild bird.

There are additional protections of certain birds under the act, with clause 1, 1ba stating that it is an offence to *“at any other time take, damage, destroy or otherwise interfere with any nest habitually used by any wild bird included in Schedule A1;”*

[Schedule A1 of the countryside and wildlife 1981 act](#) details which wild birds are protected under specific penalties.

Presence of Birds at St Aidan's

The following rare birds (as listed on schedule 1 of the countryside and wildlife act) are listed on the RSPB St Aidan's web site as being present on site

Name	Scientific Name	Habitat	Migratory?
Bittern	Botaurus stellaris	Large reedbeds and other wetland habitats	Yes, although some may be present in the UK all year
Barn Owl	Tyto alba	Open country, including farmland, moorland, and marshland	Mostly resident, but can move around in hard weather
Harriers	Circus spp.	Marshlands, meadows, grasslands, and arable fields	Yes, but varies by species

Of particular consideration are Barn Owls which have been spotted using parts the Oddball dragline excavator as a nesting ground. Information on the locations of their nest has been received by LCT

In addition, the following wild rare birds (as listed on schedule 1 of the countryside and wildlife act) have been observed by local wildlife spotters at St Aidan's.

Name	Scientific Name	Habitat	Migratory?
Black-necked Grebe	Podiceps nigricollis	Freshwater bodies with plenty of vegetation, sometimes brackish or saline waters	Yes, winters in southern Europe and Africa
Red Kite	Milvus milvus	Mixed woodland, farmland, and grassland	Mostly resident, some northern populations are migratory
Cetti's Warbler	Cettia cetti	Wet areas with dense shrubs and bushes	Mostly resident, some are short-distance migrants
Kingfisher	Alcedo atthis	Rivers, streams, ponds, and lakes with clear water and abundant perches	Some are resident, others are migratory
Common Scoter	Melanitta nigra	Marine coastal areas, large lakes and reservoirs during breeding season	Migratory, breeding in northern Europe and Asia
Garganey	Anas querquedula	Freshwater lakes and reservoirs with dense surrounding vegetation	Migratory, winters in Africa and Southern Asia
Hobby	Falco subbuteo	Open country with scattered woodland, also marshes and wetlands	Migratory, winters in Africa
Spoonbill	Platalea leucorodia	Marshes, river banks, and shallow lakes	Migratory, but some populations may remain year-round

To successfully stage Nest at St Aidan's Nature Park, Leeds Culture Trust is acutely aware of the need to plan and deliver the production in a way that does not disturb nesting birds at the park. This requirement has been at the forefront of the project team's mind throughout the planning process.

The details below outline the mitigations that have been put in place to date in the planning of the production, as well as the practical measure that will continue to be taken throughout delivery.

**Show and script development**

- Site visits conducted at an early stage with the creative team and RSPB to understand the site and its limitations.
- Initial fact-finding site visits and plans to identify which areas of the park might be suitable to use and which areas should be avoided, such as not using the wetland or marsh areas of the park and programming all activity in the recreational areas.
- Timing of performances set to ensure they take place during dusk and twilight, rather than in full darkness.
- Constraints of site built into the early drafts of the show to ensure a viable script has been produced.
- Expectation set with creative team that the arrival of new nesting birds may require adjustments of plans to ensure they are not disturbed.

**Production planning**

- Produce a Biodiversity Impact assessment of the activity planned and ensure its findings are considered in the further planning of the event.
- Audience route and performance locations discussed with RSPB prior to being finalised, to ensure suitability and for RSPB to raise any concerns regarding local flora and fauna.
- Set, lighting and sound installation positions designed to ensure there is no projecting of sound or lighting across any treelines, hedgerows or marshland.
- Information received from RSPB on the observed locations of Barn Owls on the dragline to inform the projection area used. This is to be limited to the front visible section of the dragline, away from any areas where Barn Owls have previously been spotted.
- Infrastructure installation to be kept to recreational areas of the site, where they will not negatively impact the wildlife.

**On-site delivery of performances**

- Prior to starting work an on-site review to take place by Leeds Culture Trust and RSPB of the locations being used by the performance to ensure there are no new rare nesting birds that may be impacted.
- Event staff setting up will be supervised by a dedicated Sustainability Officer, who will ensure the agreed plans are being always followed. Any deviations will require work to stop until an assessment can be made.

- The performance locations will be re-checked each day to observe for new activity, if any is found, the process above will be followed again.
- If any nesting birds are observed in the areas where the production will take place, an assessment will be made as to whether plans need to be altered, this will include:
  - How close are audiences, performers or event staff pass to the nesting bird?
    1. Do audience routes need to be altered to avoid the area?
  - Are there Lighting or projection effects planned in that area?
    1. What proximity will they be to the nest?
    2. Can they be altered in terms of where they are directed, or their intensity?
    3. Do they need to be removed from the production?
  - What sound effects are used in this area?
    1. What volume will the sound effects be?
    2. Can the effect be reduced in volume?
    3. Does the sound effect need to be removed from the performance?

Decisions based on the questions above are to be discussed with RSPB prior to being finalised.

Any advice given by RSPB as to the suitability of the assessment is to be taken and implemented.

A record of the decisions and advice is to be kept for review after the event.

**From:** Tom Harman  
**Sent:** 08 August 2023 16:43  
**To:** Roisin Caffrey <roisincaffrey@leeds2023.co.uk>  
**Subject:** RE: Letter about working together on Nest

Dear Leeds City Council,

We have been working closely with the Leeds2023 project team over the last year. They have been in consultation with the RSPB throughout the development of the plans for the event known as "Nest" which is scheduled to take place this September. The Leeds City Council site known as St Aidan's Nature Park is managed by the RSPB for nature, water management (flood prevention), and recreation and is a unique and vital local asset for both wildlife and people.

The team at Leeds2023 have worked closely with our site team, ecology department and visitor operations to ensure this activity does not encroach on to / or adversely affect the conservation area of the site which is under RSPB management. We are satisfied that they have addressed our concern regarding disturbance to wildlife within the RSPB conservation area, by limiting the event within the confines of the sites defined recreation area and public footpaths, the time of year it is held and that they (Leeds2023) understand the noise and lighting constraints that were of concern to us regarding the RSPB conservation area.

They have throughout the development of the event been in communication with the RSPB.

Regards

Tom Harman  
Senior Site Manager  
RSPB Aire Valley  
(St Aidan's Nature Park & Fairburn Ings Nature Reserve)